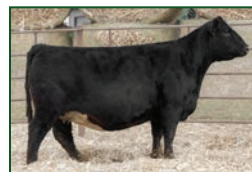




## SimAngus™

- High-selling bull in Schooley Cattle sale 2024 at \$55,000 going to English Oaks Ranch.
- Limitless combines extreme growth/performance with elite marbling, \$API, and \$TI.
- His dam's (Schooley Miss 823F 068H) first five sons average \$23,500.
- Heads a strong class of Hook's Galileo sons with muscle, phenotype, and LIMITLESS breeding options.



Schooley Miss 823F 068H – Dam

ASA# 4256883 • 5/8 SM 3/8 AN • Homozygous Black • Homozygous Polled

Bridle Bit Eclipse E744  
Sire: Hook's Galileo 210G  
Hook's Evita 18E

EGL Firesteel 103F  
Dam: Schooley Miss 823F 068H  
Schooley Miss 3000A 823F

**Semen: \$75/unit; minimum 10 units**

Semen available through owner

Trait	CE	BW	WW	YW	ADG	DMI	\$Gain	MCE	Milk	MWW	Stay	DOC	CW	YG	Marb	Fat	REA	Shr	API	TI
EPD	14.6	3.0	112.4	183.0	.44	1.91	.09	8.6	29.6	85.8	16.5	18.3	90.8	-.26	1.1	-.075	1.28	-.28	191.0	119.2
ACC	.44	.46	.48	.49	.49	.35	.39	.27	.23	.30	.35	.45	.44	.35	.40	.38	.42	.02		
%	30	95	1	1	1	99	15	25	10	1	35	3	1	30	1	10	1	65	1	1

EPD as of 2.26.25



Roman Schooley  
22971 195th Street • Bloomfield, IA  
515-450-3685  
schooleycattle@gmail.com  
www.schooleycattle.com

## English Oaks Cattle

Michael Hayman Jr  
PO Box 883  
Auburn, AL 36830  
912-572-7408  
mhayman@englishoaksranch.com



## SimAngus™

- Schooley Longshot was seen by many as a top bull in the 2024 bull offering from Schooley Ranch.
- His excellent feet, legs, disposition, extra length of body and natural thickness are all traits that make him a must-use sire!
- Combining his phenotype with an excellent EPD profile are reasons we know he is the bull to perfectly fit any program to achieve the next level of progeny.
- Current at Teter Ranch, we have 25 Longshot calves on the ground, his phenotype is already present at this young age with attractive eye appeal.
- The calves have been solid black with very little or no added white on the underline.
- We truly believe the progeny of Schooley Longshot will make a huge impact on our industry.



Dam – Schooley Miss 823F 068H

ASA# 4256880 • 5/8 SM 3/8 AN • Homozygous Black • Homozygous Polled

Bridle Bit Eclipse E744  
Sire: Hook's Galileo 210G  
Hook's Evita 18E

EGL Firesteel 103F  
Dam: Schooley Miss 823F 068H  
Schooley Miss 3000A 823F

**Semen: \$50/unit**

Semen available through owners.

Trait	CE	BW	WW	YW	ADG	DMI	\$Gain	MCE	Milk	MWW	Stay	DOC	CW	YG	Marb	Fat	REA	Shr	API	TI
EPD	17.2	.8	104.3	165.9	.39	1.48	.08	10.2	29.8	81.8	15.6	20.5	61	-.19	1.18	-.048	.87	-.28	196.6	118.6
ACC	.44	.47	.49	.50	.50	.33	.38	.27	.22	.30	.34	.45	.43	.34	.40	.37	.41	.02		
%	10	65	1	2	3	95	25	10	10	1	45	1	4	55	1	40	20	65	1	1

EPD as of 2.7.25



Zach and Beth Teter  
620-583-9338  
2276 L Rd  
Eureka, KS 67045  
teteranchks@yahoo.com



Roman Schooley  
515-450-3685  
22971 195th St.  
Bloomfield, IA 52537  
schooleycattle@gmail.com

## Bergmann Land and Cattle

785-410-3787  
2724 28th Road  
Vermillion, KS 66544  
alanbergmann81@gmail.com