

Hook's Full Figures 11F



ASA# 3403323 • 3/4 SM 1/4 AN • Heterozygous Black • Homozygous Polled

MAR Innovation 251
Sire: TJ Diplomat 294D
TJ 33Y

Hook's Shear Force 38K
Dam: Hook's Docila 23D
Hook's Yonkers 21Y

Trait	CE	BW	WW	YW	ADG	DMI	\$Gain	MCE	Milk	MWW	Stay	DOC	CW	YG	Marb	Fat	REA	Shr	API	TI
EPD	16.5	-1.7	84.1	131.8	.3	.66	.08	13	35.7	77.7	11.4	15.8	36.5	-.36	.69	-.031	1.23	-.37	156.9	98.2
ACC	.72	.87	.84	.84	.84	.47	.47	.59	.61	.68	.41	.73	.69	.53	.68	.62	.65	.10		
%	15	25	25	25	30	35	25	1	1	3	85	15	40	15	15	55	1	30	15	4

EPD as of 1.13.25



TeKrony Brothers
47840 180th Street
Clear Lake, SD
605-237-8057
tekronybrothers.com



Hook Farms
Tom and Shannon Hook
11333 180th St. • Tracy, MN
Cell: 507-829-5283
hookfarms@mvtvwireless.com
www.hookfarms.com

SimAngus™

- Diplomat son possessing faultless structure, massive rib dimension, and impressive muscle expression.
- Dominant data achieved at every test and measurement, with every performance ratio 109 or higher.
- Progeny have been met with tremendous breeder satisfaction due to their impressive structural soundness and complete performance profile.
- Few young sire prospects can match Full Figures's blend of impeccable type with the top-tier maternal traits for MCE, Milk, MWW, and Stayability.

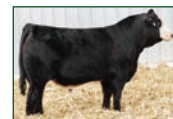


Semen: \$30/unit

Contact Jessica Tekrony 605-237-8057 or
Allied to order semen.



Son – Five Star Jackson J10
Five Star Ranch, MN, and
Drake Simmental, IA



Son – TKB MR Full Figures
Landolfo ASA# 4320214

ALLIED
GENETIC RESOURCES
www.alliedgeneticresources.com

Hook's Galileo 210G



ASA# 3563620 • 3/4 SM 1/4 AN • Homozygous Black • Homozygous Polled

Bridle Bit Calvary C503
Sire: Bridle Bit Eclipse E744
Bridle Bit Miss A327

Hook's Beacon 56B
Dam: Hook's Evita 18E
Hook's Yuma 49Y

Trait	CE	BW	WW	YW	ADG	DMI	\$Gain	MCE	Milk	MWW	Stay	DOC	CW	YG	Marb	Fat	REA	Shr	API	TI
EPD	17.4	-2.2	90.1	140.5	.32	1.23	.02	12.3	37.1	82.0	19.2	19.5	50.0	-.16	1.22	-.04	.71	-.38	204.9	114.9
ACC	.82	.91	.89	.89	.89	.50	.51	.63	.60	.67	.46	.84	.73	.54	.69	.59	.69	.09		
%	10	20	15	15	25	85	80	2	1	1	10	2	15	65	1	55	40	25	1	1

EPD as of 2.19.25



Lucas and Randy Anderson
27458 Co. Rd. 13 • Starbuck, MN
Lucas 320-424-3010
Randy 320-805-0188
www.highlandacrescattle.com



Hook Farms
Tom and Shannon Hook
11333 180th St. • Tracy, MN
Cell: 507-829-5283
hookfarms@mvtvwireless.com
www.hookfarms.com

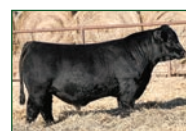
COW CAMP RANCH
Kent & Nolan Brunner
3553 Upland Rd
Lost Springs, KS 66859
(785) 466-1129
www.CowCampBeef.com

SimAngus™

- Sons and Daughters of Galileo have topped sales across the country and have become leading herd sires, donors and productive cows.
- Son of the matriarch, Hook's Evita 18E, who has become a top Simmental cow in the breed for producing high-value progeny for both seedstock and commercial producers alike.
- High-accuracy EPD support actual calf performance of a true spread bull offering a high degree of calving ease without sacrificing on growth.
- A top proven sire for improving marbling and adding docility that can be used to produce both purebred and percentage cattle.
- Daughters have been highly productive with strong maternal instincts, good teat size, and tight udder suspension.



Son FPL Jurisdiction 103J
\$30,000 high seller for
Four Point Livestock



Son WS Marvel 8M
\$167,500 high seller for
Wilkinson Farms Simmentals



Daughter CCR MS 4085
Galileo 1297J high seller for
Cow Camp Ranch

Semen: \$50/unit; limited inventory

Semen available through
owners or Allied and Cattle Visions

CATTLE VISIONS
www.cattlevisions.com

ALLIED
GENETIC RESOURCES
www.alliedgeneticresources.com