

HA Amplitude 9J



ASA# 3875162 • 5/8 SM 3/8 AN • Homozygous Black • Homozygous Polled

Bridle Bit Eclipse E744
Sire: Hook's Galileo 210G
Hook's Evita 18E

Hook's Capitalist 37C
Dam: HA Giovanna 918G
Hook's/JRA Demi 605D

Trait	CE	BW	WW	YW	ADG	DMI	\$Gain	MCE	Milk	MWW	Stay	DOC	CW	YG	Marb	Fat	REA	Shr	API	TI
EPD	4.5	3.1	94.4	150.7	.35	1.35	.04	2.7	28.2	75.2	14.6	21	57.4	-.03	1.03	-.005	.66	-.29	160.3	102.9
ACC	.57	.63	.59	.59	.59	.30	.35	.31	.23	.33	.35	.49	.49	.37	.45	.39	.44	.04		
%	99	95	10	10	15	90	60	99	15	10	55	1	10	90	2	90	50	60	15	3

EPD as of 2.19.25



Zac 701-595-6887
Levi 701-720-6652
Ian 701-720-4966



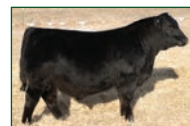
Lucas and Randy Anderson
27458 Co. Rd. 13 • Starbuck, MN
Lucas 320-424-3010
Randy 320-805-0188
www.highlandacrescattle.com

SimAngus™

■ One of the featured bulls on the Bred for Balance sale, Amplitude can change your herd in one generation with his impressive EPD profile, impeccable phenotype, and diverse pedigree.

■ Amplitude sires an unrivaled and elite combination of dimension of rib shape, bone mass, structural soundness, muscle expression, and overall eye appeal.

■ Backed completely by Hook Farms breeding, his reputable maternal pedigree includes the 2018 % Simmental Junior and Open Show National Champion.



HA Mount Olympus 43M
Son of Amplitude



Hook's Galileo 210G, sire



Hook's/JRA Demi 605D,
maternal granddam



HABR Leona L340 Daughter
of Amplitude

Semen: \$30/unit

Semen available
through owners or:

CATTLE Visions
www.cattlevisions.com

ALLIED
GENETIC RESOURCES
www.alliedgeneticresources.com

HA Magnifique 72L



ASA# 4196053 • 5/8 SM 3/8 AN • Homozygous Black • Homozygous Polled

Bridle Bit Eclipse E744
Sire: Hook's Galileo 210G
Hook's Evita 18E

TJ Diplomat 294D
Dam: Hook's Gigi 67G
Hook's Dalilah 105D

Trait	CE	BW	WW	YW	ADG	DMI	\$Gain	MCE	Milk	MWW	Stay	DOC	CW	YG	Marb	Fat	REA	Shr	API	TI
EPD	22.3	-5.1	72.2	110.2	.24	.57	.04	14.0	33.4	69.4	21.2	14.1	29.3	-.13	1.25	-.004	.62	-.37	213.8	107.8
ACC	.47	.51	.48	.48	.48	.31	.37	.28	.23	.32	.35	.46	.44	.35	.41	.38	.42	.04		
%	1	2	70	70	70	30	60	1	2	20	3	30	70	70	1	90	60	30	1	1

EPD as of 2.13.25

SimAngus™

■ CALVING EASE PREDICTABILITY AT ITS VERY BEST!

■ PROVEN in Multiple Herds by HIS EXCEPTIONAL, EASILY BORN CALVES!

■ Breed All Your Heifers plus Your Best Cows and Donors to Him...with Total Confidence!

■ Visualize the Value Impact of His Superb Individuality, Structure, Eye Appeal, Disposition and Pacesetting EPDs to Your Next Calf Crop!

■ Few bulls combine his IMPRESSIVE PHENOTYPE and GENETIC POWER in such a UNIQUE PACKAGE!

■ Plan to keep every daughter and trust that his calving ease sons and service will be in high demand! His impressive, bountiful dam is now in the heralded Clear Springs herd.

■ ORDER his extra high quality semen early to ensure availability.

Semen: \$30/unit

Semen available from Allied Genetic Resources,
Cattle Visions,
and APEX Cattle.

ALLIED
GENETIC RESOURCES
alliedgeneticresources.com

CATTLE Visions
cattlevisions.com

APEX
CATTLE
apexcattle.com



Dan Leo
1146 7th Avenue
Dannebrog, NE 68831
308-750-0200