

## TERS Kodiak 206K



ASA# 4042365 • PB SM • Homozygous Black • Homozygous Polled

Gibbs 7382E Broad Range  
Sire: Gibbs 9114G Essential  
Gibbs 7153E Star 3136A

MCM Top Grade 018X  
Dam: TECS Extreme 709E  
Hook's Xcellence 87X

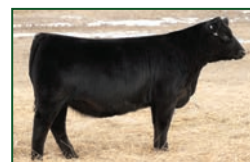
Trait	CE	BW	WW	YW	ADG	DMI	\$Gain	MCE	Milk	MWW	Stay	DOC	CW	YG	Marb	Fat	REA	Shr	API	TI
EPD	16.9	-1.8	74.4	116.0	.26	.26	.10	9.8	34.2	71.3	21.9	19.2	16.1	-.25	.5	-.03	.65	-.34	174.9	91.2
ACC	.59	.70	.67	.65	.65	.37	.40	.33	.25	.35	.35	.60	.47	.36	.47	.36	.45	.02		
%	4	10	70	55	45	15	4	5	3	15	3	1	95	90	15	99	90	55	5	20

## Simmental

■ Kodiak, the \$110,000 sensation from the 2023 Bred for Balance sale, brings exceptional docility and maternal performance to the table!

■ He has added frame size for a Purebred heifer bull with elite structural correctness and hoof quality. Kodiak is one of the most impressive mature bulls you will ever see!

■ His first calf crop has been highlighted by his feminine, soft-made females who are sure to make a mark on programs across the country!



CLRS Magnolia 490M – Daughter



Schooley Miss 249M 454M  
\$40,000 Daughter

### Semen: \$50/unit

Semen available at [www.rivercreekfarms.com](http://www.rivercreekfarms.com) and Cattle Visions.

CATTLE *Visions*  
cattlevisions.com

Clear Springs  
Cattle Company

Jim Wulf Family  
Starbuck, MN  
320-288-6433 (Travis)  
twulf09@hotmail.com  
[www.bredforbalance.com](http://www.bredforbalance.com)

Schooley  
Cattle

Roman Schooley  
22971 195th Street  
Bloomfield, IA 52537  
515-450-3685  
schooleycattle@gmail.com  
[www.schooleycattle.com](http://www.schooleycattle.com)

RVR  
CRK  
RIVER CREEK  
FARMS

Joe & Kim Mertz:  
785-458-9494  
Abram & Dani Mertz:  
785-456-3986  
[www.rivercreekfarms.com](http://www.rivercreekfarms.com)

EPD as of 2.11.25

## TJ Chosen One 503M



ASA# 4366332 • PB SM • Homozygous Black • Homozygous Polled

Hook's Galileo 210G  
Sire: HA Justice 30J  
Hook's Dacia 14D

TJ Gold 274G  
Dam: TJ 44K  
TJ 59H

Trait	CE	BW	WW	YW	ADG	DMI	\$Gain	MCE	Milk	MWW	Stay	DOC	CW	YG	Marb	Fat	REA	Shr	API	TI
EPD	15.8	.6	97.1	156.4	.37	1.38	.07	8.8	27.1	75.6	21.6	15.6	53.1	-.32	.81	-.064	1.05	-.45	196.2	109.6
ACC	.43	.47	.51	.51	.51	.34	.39	.25	.17	.27	.33	.44	.43	.35	.41	.39	.41	.03		
%	10	40	10	3	3	99	20	15	25	10	3	15	3	75	2	65	15	5	1	1

EPD as of 2.21.25

## Simmental

■ Chosen One offers value for all segments of the beef industry and is one of the true genetic gems of the 2025 spring sale season.

■ Our choice and easily the most balanced option of the lead and high-selling flush at the 2025 Triangle J Sale.

■ Soft-made, sound, gentle, and very attractive, he offers Maternal and Carcass advancement that few others can boast with excellent Calving Ease.



HA Justice 30J – Sire

### Semen: \$35/unit

Semen available through owners or:

ALLIED  
GENETIC RESOURCES  
[www.alliedgeneticresources.com](http://www.alliedgeneticresources.com)

## J/C SIMMENTALS

5075 E. Clarabella Rd, Clare, MI 48617 • 989-429-2834 (cell)  
jlmiller@jdmatalworks.com • [www.jcsimmentals.com](http://www.jcsimmentals.com)

TRIANGLE J  
Ranch  
Miller, NE  
Bull Sale Last Sunday in January  
Female Sale 1st Sunday in November  
[trianglejranch.com](http://trianglejranch.com)

Miller, Nebraska  
Darby Line 308-627-5085  
[www.trianglejranch.com](http://www.trianglejranch.com)

Four Corner  
Farm  
Eufaula, Alabama

ALL  
Beef  
Marty Ropp  
406-581-7835