

Schooley Megatron 079M



ASA# 4424891 • PB SM • Homozygous Black • Homozygous Polled

WS All-Around Z35
Sire: OMF Epic E27
OMF Time Less B100

KBHR Revolution H071
Dam: Schooley Miss 823F 200K
Schooley Miss 3000A 823F

Trait	CE	BW	WW	YW	ADG	DMI	\$Gain	MCE	Milk	MWW	Stay	DOC	CW	YG	Marb	Fat	REA	Shr	API	TI
EPD	15.1	0.2	100.1	157.7	.36	1.3	.08	8.9	22.5	72.5	18.0	15.5	57.7	-.16	.52	-.026	.93	-.29	172.9	103.3
ACC	.44	.47	.49	.50	.50	.34	.39	.28	.22	.30	.36	.46	.42	.33	.40	.36	.39	.05		
%	15	30	3	3	4	95	10	10	55	15	25	15	2	99	10	99	35	80	10	3

EPD as of 2.28.25



Roman Schooley
22971 195th Street • Bloomfield, IA
515-450-3685
schooleycattle@gmail.com
www.schooleycattle.com



Zach and Beth Teter
620-583-9338
2276 L Rd
Eureka, KS 67045
teteranchks@yahoo.com

Simmental

■ Schooley Megatron is the Epic son we've been waiting for with added frame, performance, and marbling!

■ His name Megatron represents him well: added size, wide-based, extremely long-spined, while standing correct on his feet and legs.

■ His dam Schooley Miss 823F 200K (full sister to Krown) is a maternal powerhouse with extremely feminine features in her head, neck, and perfect udder.

■ Look for MEGATRON to add Simmental SIZE and PERFORMANCE, in a CE to YW spread!



Schooley Miss 823F 200K - Dam

Semen: \$50/unit Semen available through owners.

Schooley Movement 413M



ASA# 4425203 • PB SM • Homozygous Black • Homozygous Polled

KBHR Revolution H071
Sire: Schooley Krown 28K
Schooley Miss 3000A 823F

LBRS Genesis G69
Dam: Schooley Miss E69 171J
OMF Miss Boulder E69

Trait	CE	BW	WW	YW	ADG	DMI	\$Gain	MCE	Milk	MWW	Stay	DOC	CW	YG	Marb	Fat	REA	Shr	API	TI
EPD	15.0	-.7	95.6	158.4	.39	1.71	.05	19.3	26.6	74.3	19.6	18.7	47.4	-.17	.9	-.025	.84	-	197.8	112
ACC	.41	.46	.45	.46	.46	.25	.31	.22	.17	.25	.33	.40	.40	.32	.37	.34	.37	-		
%	15	20	10	3	2	99	35	10	25	10	15	2	10	99	1	99	50	-	1	1

EPD as of 2.28.25



Roman Schooley
22971 195th Street • Bloomfield, IA
515-450-3685
schooleycattle@gmail.com
www.schooleycattle.com



Ryan Anderson
641-226-1884

Simmental

■ Schooley Movement 413M combines two of the great cow families in the breed.

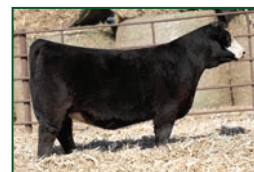
■ Known for excellent performance, maternal presence, and unparalleled EPD!

■ 413M was the lead-off bull in a very high-class flush.

■ He's a striking baldy bull with excellent feet, athletic structure, three-dimensional presence.

■ Sired by Schooley Krown and out of Schooley Miss E69 171J two of the most prominent individuals on the ranch combining huge spread numbers, marbling, \$API, and \$TI.

■ Look for MOVEMENT to move the breed forward with his modern-day look and his futuristic data set!



Full sibling to Movement

Semen: \$40/unit

Semen available through
Cattle Visions 573-641-5270.

CATTLE Visions
www.cattlevisions.com