



RRS **Gold Judge**

ASA# 4096967 • PB SM • Black • Homozygous Polled

Hook's Eagle 6E  
Sire: TJ Gold 274G  
TJ 12C

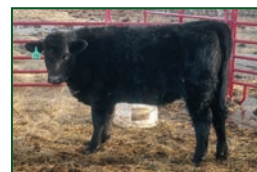
CLRS Constitution 311 C  
Dam: RFS Miss Heather H218  
Y176

Trait	CE	BW	WW	YW	ADG	DMI	\$Gain	MCE	Milk	MWW	Stay	DOC	CW	YG	Marb	Fat	REA	Shr	API	TI
EPD	18.1	-4.4	67.9	102.4	.22	.53	.02	11.1	22.7	56.6	19.4	14.7	3.9	-.26	.56	-.042	.41	-.41	176.1	90.6
ACC	.43	.46	.49	.47	.47	.34	.39	.26	.23	.31	.34	.41	.41	.33	.39	.35	.39	.02		
%	2	1	90	85	70	35	75	2	55	80	15	20	99	90	10	90	99	20	4	20

EPD as of 2.24.25

## Simmental

- RRS Gold Judge's dam is a great mother. She has had three calves all born in March unassisted.
- RRS Gold Judge's first-calf was born June 4 to a first-calf heifer. The calf was delivered quickly and the calf was drinking shortly after birth.



RRS H13 Heaven – maternal sister to Gold Judge.

**Semen: \$40/unit**

Semen available through owners and Cattle Visions 573-641-5270.

**CATTLE Visions**  
www.cattlevisions.com

### Rodney Cloose

18821 Russell Dr. NW  
Solway, MN 56678  
218-368-2931



SAS **Black Majic** L334

ASA# 4265277 • PB SM • Heterozygous Black • Homozygous Polled

Remington Lock N Load 54U  
Sire: SRH Hannibal 5H  
SRH Precious 73A

Silver Lake Gold Digger 20G  
Dam: SAS Country J334  
SAS Miss C332

Trait	CE	BW	WW	YW	ADG	DMI	\$Gain	MCE	Milk	MWW	Stay	DOC	CW	YG	Marb	Fat	REA	Shr	API	TI
EPD	12.0	1.9	89.9	140.8	.32	1.02	.06	6.0	20.7	65.6	16.0	14.7	32.6	-0.4	.04	-.068	1.0	-	132.0	83.4
ACC	.43	.47	.45	.45	.45	.31	.35	.21	.15	.25	.32	.40	.39	.31	.36	.33	.36	-		
%	45	65	15	15	15	80	25	50	70	40	45	20	40	40	80	65	25	-	55	40

EPD as of 2.11.25

## Simmental

- \$55,000 evaluation through Springer Simmentals, value based genetics.
- Add mass and substance to your cow herd while maintaining birthweights and adding that killer look.
- Genetic outcross that will add bone, hoof size and quality, hair, fleshing ability, and performance.
- A must-use sire for profit-driven seedstock and commercial operations.
- BW: 82, WW: 729, YW: 1,356, REA: 16.46, ADG on test 4.63
- Act. SC: 39 cm



Dam – SAS Country J334

**Semen: \$50/unit**

Semen available through Cattle Visions 573-641-5270.

**CATTLE Visions**  
www.cattlevisions.com

**Springer**  
SIMMENTALS

Jeff and Lynda Springer  
3119 310th Street  
Cresco, IA 52136  
641-330-6654  
Sprinsim@gmail.com

**8Q FARMS**

Steve & Jessica Campbell  
Lake Crystal, MN  
507-380-3074

**Mineral Mountain Cattle**  
Mike & Brandon Yardley  
435-691-4438