

## QB Special Ops K11



ASA# 4117080 • PB SM • Homozygous Black • Homozygous Polled

HSR Power Plus  
Sire: Hart Assult 059G  
Hart Miss 024D

Colorado Bridle Bit E752  
Dam: QB Ms G906  
QB Ms E768

Trait	CE	BW	WW	YW	ADG	DMI	\$Gain	MCE	Milk	MWW	Stay	DOC	CW	YG	Marb	Fat	REA	Shr	API	TI
EPD	4.7	4.7	107.2	177.1	.44	1.82	.08	2.6	32.8	86.5	18.3	12.0	67.5	-.23	.27	-.047	1.1	-	143.3	96.3
ACC	.50	.65	.58	.59	.59	.27	.31	.23	.16	.28	.31	.14	.39	.31	.34	.30	.38	-		
%	99	95	1	1	1	99	10	95	4	1	25	50	1	95	35	90	10	-	35	10

EPD as of 2.25.25



Kevin Hansen Family  
701-720-6551  
Wade and Merri Staigle  
701-794-3351  
701-226-6464 cell  
www.dakotaxpress.com

## Simmental

- Big-middled bull, excellent muscle and shape in the rear quarter.
- Very sound-footed with ideal toe shape.
- Very maternal line with strong udder qualities.
- Colorado daughters are making great cows.
- 805 lb. 205 adj., 1,544 lb. 365 adj. and 42 cm testicles as a yearling.



HSR Night Vision M479 – high-selling bull at Dakota Xpress Sale.

**Semen: \$40/unit; volume pricing available**  
Semen available through Allied



www.alliedgeneticresources.com

## R Plus Mandate 1044J



ASA# 4106145 • PB SM • Heterozygous Black • Homozygous Polled

R Plus 5015C  
Sire: R Plus Yuma 9087G  
Miss R Plus 3007A

R Plus Blackedge  
Dam: Miss R Plus 4193B  
LFE BS Dakota Coal 610P

Trait	CE	BW	WW	YW	ADG	DMI	\$Gain	MCE	Milk	MWW	Stay	DOC	CW	YG	Marb	Fat	REA	Shr	API	TI
EPD	9.3	2.4	83.3	137.1	.34	.96	.10	6.5	18.7	60.2	13.4	15.7	37.4	-.52	-.25	-.106	1.2	-	106.1	72.1
ACC	.60	.76	.71	.69	.69	.34	.34	.30	.21	.34	.36	.44	.49	.37	.39	.35	.46	-		
%	80	75	35	20	10	80	4	40	85	65	75	10	25	10	99	10	10	-	95	85

EPD as of 3.4.25



Dustin and Jennilee Stewart  
Fisher Branch, Manitoba, Canada  
1-204-761-6644  
rainbowriversimmentals@gmail.com

## Simmental

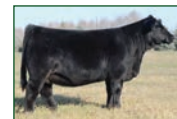
- Less than 200 units remain in the US: one and only shipment!
- \$160,000 high-seller at the 2022 R Plus Simmentals Bull Sale.
- His semen has sold for up to \$700 CAD north of the border.
- Curve bender: 88-lb. BW to 1,605-lb. sale weight.
- Short 280-day gestation.
- 49 cm mature SC.
- Tremendous foot quality & effortless movement (his video is a must-see: View it on our website).
- Outcross with an elite and proven pedigree – sired by the \$150k Yuma and a big capacity, good-footed dam.
- Use Mandate to add length of body, correct structure, fix feet, improve docility, shorten gestation, and add extreme vigor and survivability at birth.



\$20,000 Son



Son



\$17,000 Daughter



\$14,500 Daughter



Mandate's Front & Hind Feet

**Semen: \$50/unit**

Available through owner and stored at Genex Hawkeye West, Montana.  
Order online at [www.rainbowriversimmentals.com](http://www.rainbowriversimmentals.com).

